

# IMAGE FORMATION IN LENSES RAY DIAGRAMS

## DOUBLE CONVEX (CONVERGING) LENSES

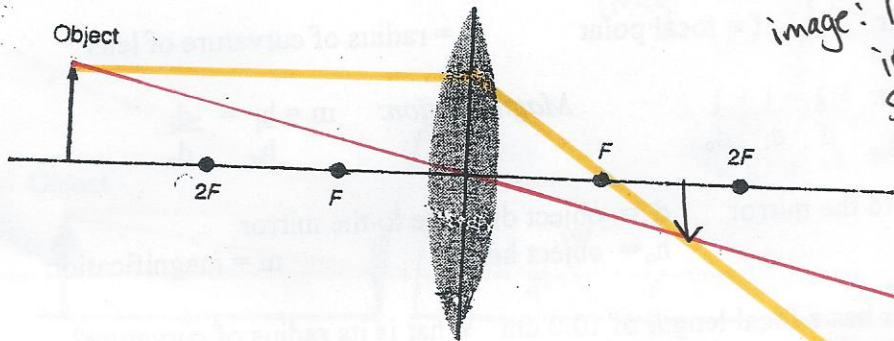


image: real  
inverted  
smaller  
between  $F$  &  $2F$

A converging lens is thick in the center and thin at the edges.

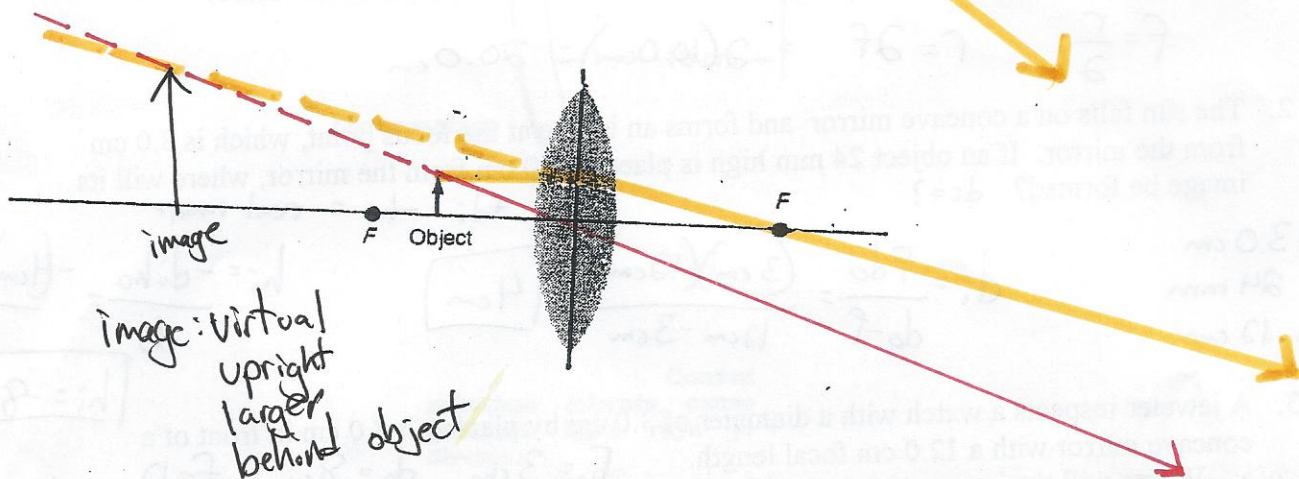
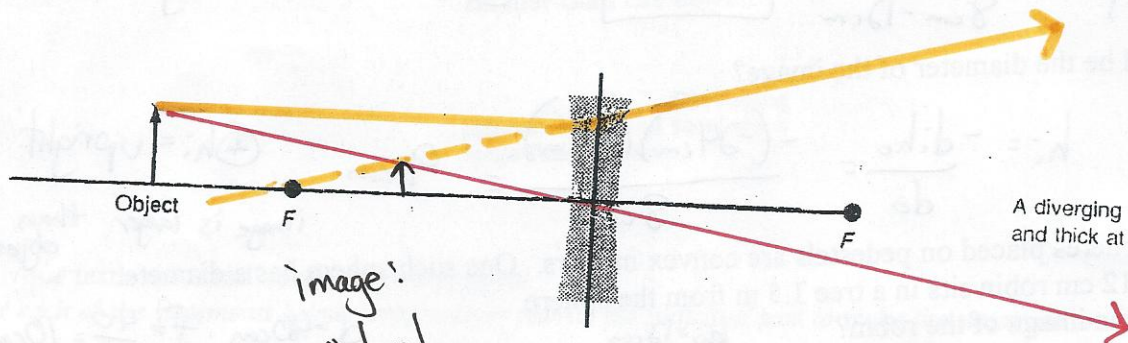


image: virtual  
upright  
larger  
behind object

## DOUBLE CONCAVE (DIVERGING) LENSES



A diverging lens is thin in the center and thick at the edges.

image: virtual  
upright  
smaller  
between obj + lens